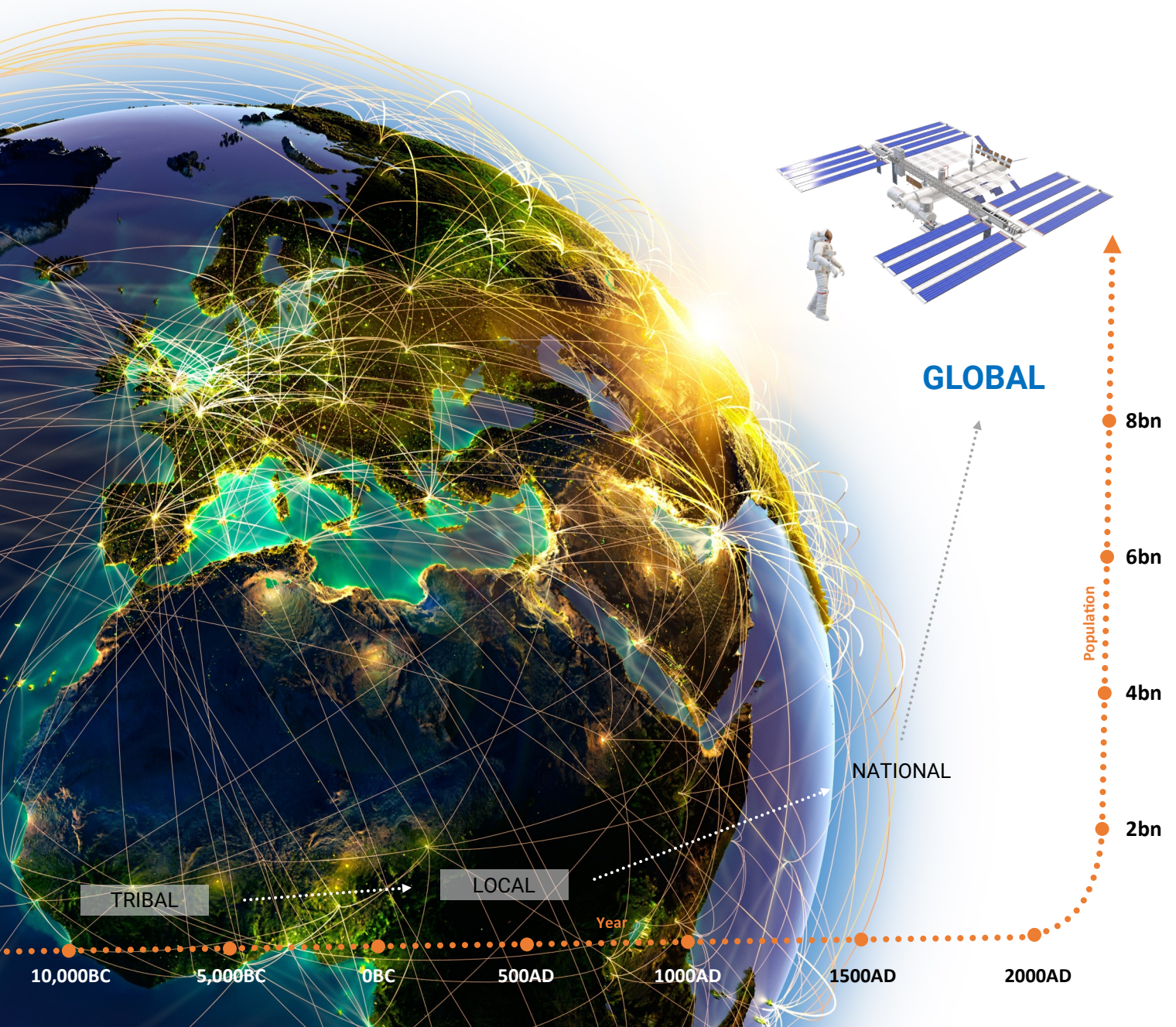


# GLOBAL MODEL

## INTERNATIONAL HUMANITARIAN ORGANISATION (IHO)

A **GLOBAL MODEL** ALIGNS THE INTERESTS OF ALL NATIONS  
SO THAT WE CAN WORK TOGETHER AS ONE PEOPLE  
AND FIX THE WORLD'S PROBLEMS - QUICKLY!



# TABLE OF CONTENTS



<b>01 / THE GLOBAL PROBLEMS</b>	<b>3</b>
<b>02 / WHAT IS THE ROOT CAUSE?</b>	<b>4</b>
<b>03 / COMPARING THE PSYCHOLOGY</b>	<b>5</b>
<b>04 / GLOBAL MODEL</b> INTERNATIONAL HUMANITARIAN ORGANISATION (IHO) OF THE PEOPLE	<b>6</b>
<b>05 / GLOBAL MODEL</b> ROLES AND RESPONSIBILITIES	<b>8</b>
<b>06 / GLOBAL MODEL</b> WHY DOES A GLOBAL MODEL ACHIEVE COUNTLESS BENEFITS?	<b>10</b>
<b>07 / HISTORY TIMELINE</b> THE SOCIAL EVOLUTION OF HUMANITY	<b>12</b>
<b>08 / FREQUENTLY ASKED QUESTIONS</b>	<b>14</b>
<b>09 / IMPLEMENTING A GLOBAL MODEL</b>	<b>16</b>
<b>10 / WHAT IS THE RIGHT THING TO DO?</b>	<b>18</b>
<b>ABOUT THE AUTHOR</b>	<b>19</b>

“

Can we fix the world’s problems  
when humanity is competing  
AGAINST ITSELF?

GLOBAL PROBLEMS  
require a  
GLOBAL SOLUTION



OVERSIGHT PANEL  
GLOBAL UPDATE

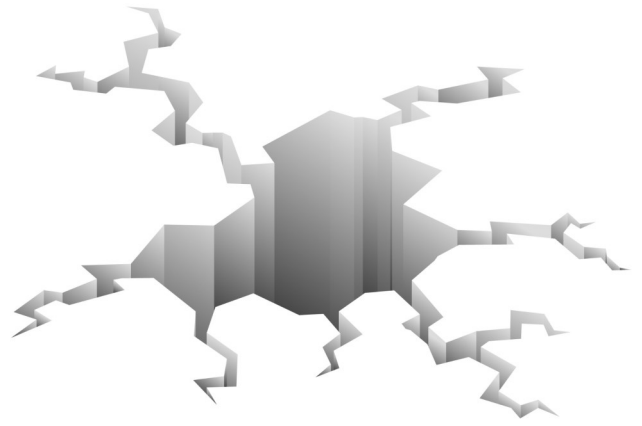
**IHO**  
INTERNATIONAL  
HUMANITARIAN ORGANISATION  
THE UNITED NATIONS OF THE PEOPLE





THE GLOBAL

# PROBLEMS



Can we fix these problems...

Political aggression between Nations · War · Nuclear threats · Climate Change · Greed · Poverty · Famine · Extreme Wealth inequality · Tax Evasion · Migration/Immigration challenges · Terrorism · Civil conflicts · Population challenges · Global Corruption · Partisan Politics · Genocide · Animal & Habitat destruction · Excessive Pollution · Human Trafficking · Global Health problems · Food/Water shortages · Human Rights abuse · Economic Recessions · Trade Wars · Coronavirus epidemics · Fossil Fuel consumption · Government Spying & Hacking...

...with a single decision?

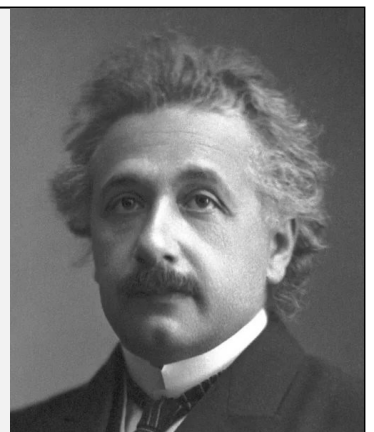
YES...by adopting a  
**GLOBAL MODEL**

Tribal → Local → National → **GLOBAL**

Einstein once said...

**“We cannot solve our problems with the same level of thinking that created them.”**

WE HAVE TO ADOPT A MORE INTELLIGENT LEVEL OF THINKING



# WHAT IS THE ROOT CAUSE?



To understand why a GLOBAL MODEL will fix ALL of humanity's major problems, you first need to understand the *root cause* of why so many problems exist in the world today.

The key reason why humanity has been plagued by many of its problems *for centuries*, with ever-increasing serious threats—like nuclear war and planetary climate change, is that nations and their respective governments have NEVER addressed the *root cause* of these problems.

To understand the root cause, consider an intelligently designed biological system like the human body.

The Internal Organs work together in *total cooperation* with one another for the common good of the whole body. By supporting each other—they ALL BENEFIT.

On this basis of true global cooperation, the human body is demonstrating a GLOBAL MODEL in action.

Comparatively, human beings are doing the exact opposite. As a people, HUMANITY COMPETES AGAINST ITSELF. This occurs at all levels of society:

- **Nation vs Nation (for political/economic self-interest)**
- **Government vs Government (to support the nation's ideological and economic interests)**
- **Political Party vs Political Party (for political, partisan & individual self-interest)**
- **Business vs Business (for economic self-interest)**
- **Individual vs Individual (for jobs/economic survival)**

In every major sector of society, humanity essentially exists in a STATE OF CONFLICT—WITH ITSELF.

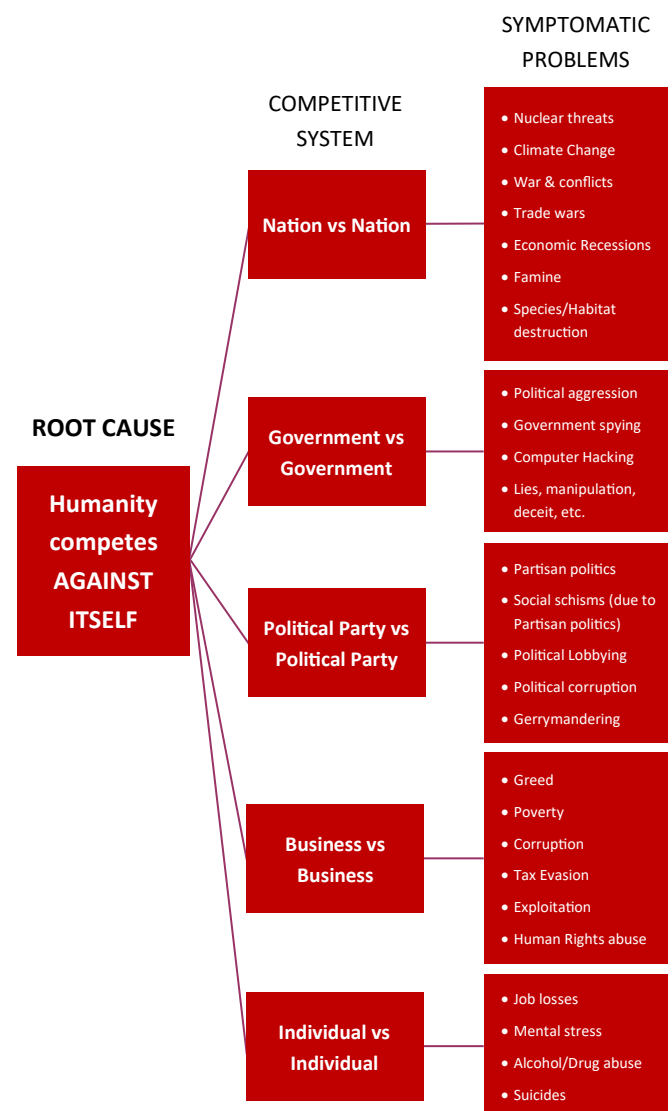
This is why so many problems exist today. Ask yourself, 'How can we fix these problems—when competing against ourselves—is what creates the problems?' Also, 'Why are we COMPETING AGAINST OURSELVES? Is there any reason that we need to?'

Well...no, there isn't.

Therefore—Is there anything preventing us from adopting a GLOBAL MODEL and working together as a people?

## ASK YOURSELF...

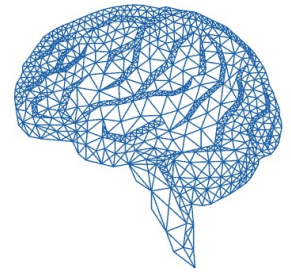
Can humanity fix its problems while it is also competing AGAINST ITSELF?



BY COMPETING AGAINST OURSELVES, WE ARE CREATING ENDLESS PROBLEMS



# COMPARING THE PSYCHOLOGY



The positive changes to humanity’s global psychology will be one of the most profound benefits of a GLOBAL MODEL. The following table highlights some examples.

MODEL	
NATIONAL MODEL	GLOBAL MODEL
PSYCHOLOGY	
Self-Interest, Competitive	Shared Interest, Cooperative
ROOT PROBLEM	SOLUTION
Humanity is competing AGAINST ITSELF	Humanity works together in GLOBAL COOPERATION
GLOBAL THINKING	
<ul style="list-style-type: none"> <li>Nation vs Nation (for National self-interest) based on a competitive economic system.</li> </ul> <p>Mental focus: Each Nation for themselves</p>	<ul style="list-style-type: none"> <li>International Humanitarian Organisation (IHO) implements global directives that benefit ALL Nations—equally.</li> </ul> <p>Mental focus: Nations working together for their common good</p>
MEETINGS (G7, G20, United Nations, COP Conferences...)	
<ul style="list-style-type: none"> <li>“What can we get out of this meeting for ourselves?”</li> <li>“How can we avoid being held accountable for the damage that we have caused?”</li> <li>“What can we do to avoid accepting responsibility for our poor decisions and bad behaviour?”</li> </ul> <p>Behaviour: Lies, deceit, manipulation, propaganda, self-interest,...</p>	<ul style="list-style-type: none"> <li>“What can we do to support other nations so that we can all benefit together?”</li> <li>“What can we contribute to help make a positive difference?”</li> <li>“What intelligent ideas can we implement to quickly achieve our shared goals?”</li> </ul> <p>Behaviour: Honesty, openness, trust, wisdom, teamwork,...</p>
SUMMARY	
<p>The current system is primitive, self-centred, and fundamentally flawed. As it is based on a system of economic competition, it places humanity in opposition—with ITSELF.</p> <p>This results in countless political, economic and social problems.</p> <p><b>This Model brings out the <u>worst</u> in humanity.</b></p>	<p>A GLOBAL MODEL adopts an intelligent design by aligning the interests of all nations to the same set of shared goals.</p> <p>This removes the <i>conflicted interests between nations</i> and allows humanity to truly work together as a people to fix its problems.</p> <p><b>This Model will bring out the very <u>best</u> in humanity.</b></p>

# GLOBAL

## International Humanitarian Org

In a GLOBAL MODEL, *humanity works together* and  
Working together as a global people provides a psychologically  
To efficiently and effectively coordinate its global initiatives, a non-p  
This Organisation will implement global directive



The diagram illustrates the IHO model structure. It features a central globe surrounded by a ring of icons representing various sectors. Five circular nodes are arranged in a ring around the globe, connected by dashed lines and arrows. The nodes are labeled: COLLABORATION, EDUCATION, LIFESTYLE, ECONOMICS, and SOCIAL. A larger circle labeled 'IHO OVERSIGHT PANEL' is positioned at the top right, with arrows pointing towards the other nodes. A smaller circle labeled 'UN' is also visible on the right side. The background is a light blue world map.

**THE OVERSIGHT PANEL ENSURES THAT THE IHO IS MEETING ITS OBJECTIVES. IT REPORTS DIRECTLY TO 'THE PEOPLE'.**

**NEW FOCUS ON ETHICAL ECONOMICS & GLOBAL RESPONSIBILITY. AN INTELLIGENT GLOBAL ECONOMIC SYSTEM WILL REMOVE THE ECONOMIC 'CONFLICTS OF INTEREST' BETWEEN NATION STATES.**

**THE IHO MODEL IS BASED ON HIGHLY SKILLED HUMANITARIAN & SCIENTIFIC SECTOR TEAMS THAT MAKE GLOBAL DECISIONS DESIGNED TO BENEFIT ALL NATIONS EQUALLY, UTILISING THE MOST UP-TO-DATE KNOWLEDGE, EXPERTISE & TECHNOLOGY ON THE PLANET.**

# MODEL

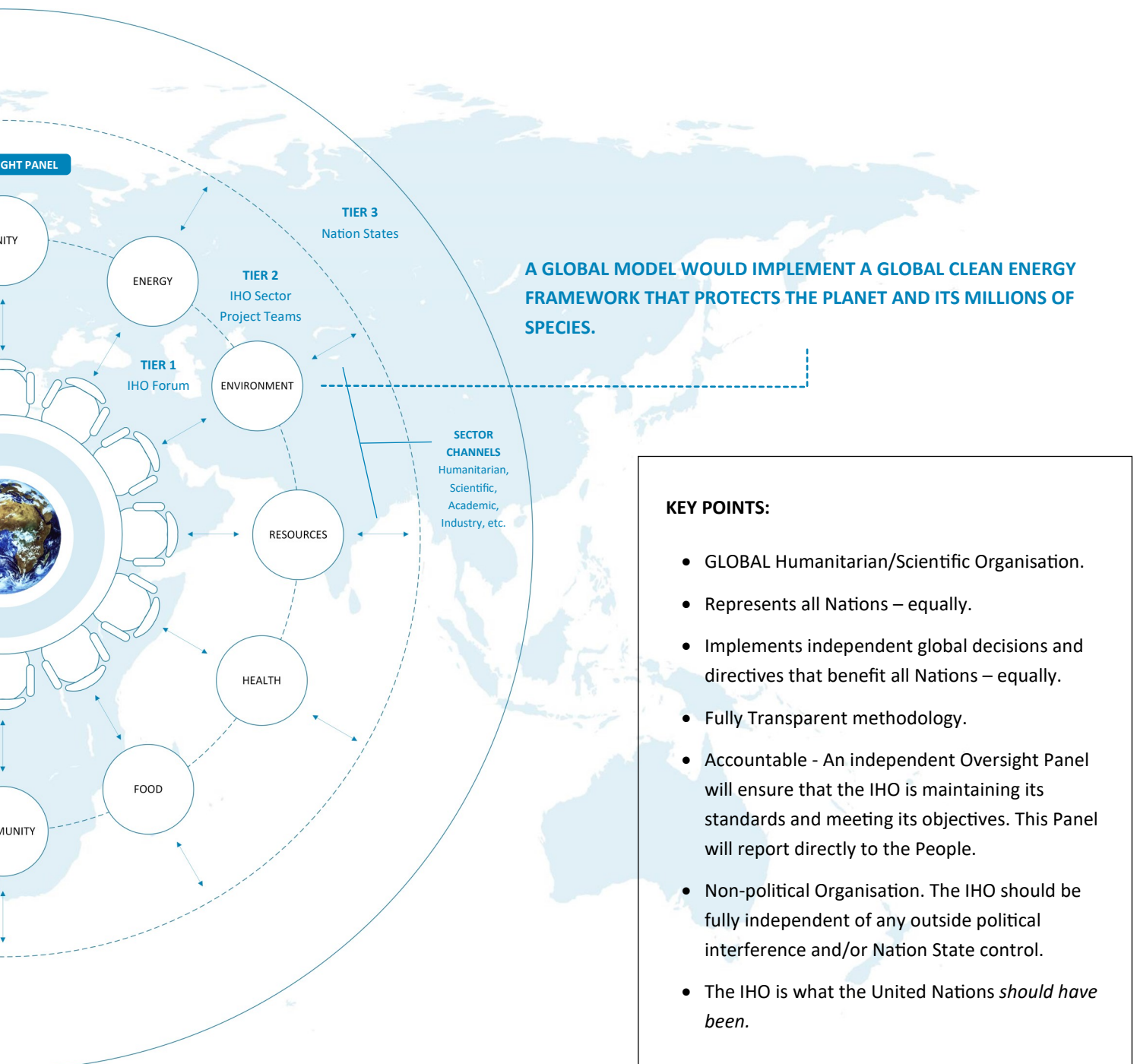
## Organisation (IHO) of the People

as a people for the common good of all nations.

ly sound foundation for humanity to solve its global problems.

political professional Humanitarian/Scientific Organisation is required.

s which support and benefit all nations—equally.





# GLOBAL MODEL

## Roles and Responsibilities

### INTERNATIONAL HUMANITARIAN ORGANISATION (IHO)

**As the Representative Organisation of Humanity, the IHO is responsible for implementing intelligent global directives to improve all nations and the state of the planet.**

One of the key reasons why humanity needs a professional global Organisation to represent its best interests is simply because Nation States are incapable of truly working together within a competitive Economic System. *A competitive economic system literally places nations in ‘conflict with each other’. It encourages each Nation to selfishly focus on its own national interests, often irrespective of the costs or consequences to other nations.*

When trying to resolve critical international challenges – like Climate Change – the focus on National self-interest leads to constant problems. A new GLOBAL MODEL will solve these ‘conflicts of interest’ between countries as it replaces *national self-interest* with the *global shared interests* of all nations.

**A GLOBAL MODEL is based on an independent, non-political, Humanitarian Organisation that can objectively act in the best interests of all nations, while making intelligent global decisions that benefit nations—equally.**

### NATION STATES

**In a Global Model, Nation States retain authority at the National level. However, if a national law is in conflict with a global directive (designed to benefit all nations equally), *the global directive takes precedence.***

National laws do not work at a global level. Nations have demonstrated time and again, that they are incapable of true global cooperation when their national political and/or economic interests are being threatened.

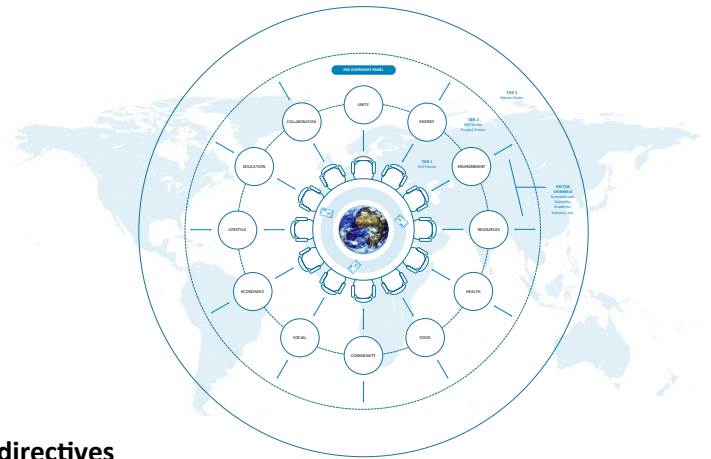
Also, far too many political decisions are being made for the wrong reasons—whether due to corruption, political lobbying or other self-serving motives. These decisions do absolutely nothing to solve the core problems in society. And some decisions—like weapons manufacturing, only make matters worse.

Simply stated, weapons provide nations with an *opportunity to use them*. Instead of needing to consider more intelligent and peaceful solutions to problems, nations can more readily resort to violence. *Therefore weapons encourage war and conflict*—NOT peace. They constantly place lives in danger. And what justifications are often given for making and selling weapons?

“If we don’t sell the weapons, people will lose their jobs.” Or just as insane, “If we don’t sell the weapons, one of our competitors (another nation) will sell them instead. We’d lose out”.

In a politically competitive world, this kind of foolish thinking and selfish behaviour happens every day. Selfish decisions and acts of selfishness always come with a cost. Whereas, truly selfless behaviour creates its own reward.

**For humanity to solve its problems, intelligence and shared interests must replace ignorance and self-interest.**





## IHO Oversight Panel

### ACHIEVING OUR BEST AS A PEOPLE

An independent Oversight Panel will ensure that the IHO maintains its standards and is meeting its objectives. It will report its findings directly to the People.

This open and fully transparent approach will help to ensure complete trust between the IHO, Nation States, and international citizens.

## IHO Sector Teams

### COORDINATING OUR GLOBAL EFFORTS

Each Sector Team will be responsible for collating the relevant data intelligence of their respective sector.

They will assess the global risks and needs of humanity in-line with the IHO core goals. Based on these assessments, they will make appropriate recommendations to improve global society for the benefit of all nations.



## Transparency

### OPEN & TRANSPARENT SYSTEM

The IHO will need to operate a completely open and transparent system.

All directives should be publicly documented with clear and concise evidence and/or reasoning for the decisions that are made. When necessary, input and feedback should be requested from relevant sectors and organisations.

Transparency will lead to trust between all nations.

## GLOBAL Operations Data Centre

### IMPLEMENTING SOLUTIONS EFFICIENTLY

To effectively and efficiently coordinate its directives globally, the IHO will need a Global Operations Data Centre (GODC) - as simulated in the graphic above.

This Data Centre will also help to ensure that the IHO can accurately assess the real-time needs of all nations (including natural disasters), and respond to meet their needs as quickly as possible.

It should operate like the human nervous system.

# Why does a GLOBAL MODEL achieve countless benefits?

The principal reason why a GLOBAL MODEL provides so many benefits to ALL nations is that it fixes the *root cause* of humanity's problems. Once humanity decides to work together as a people, it will no longer be competing AGAINST ITSELF—and is therefore no longer creating its own problems.

Compare the two Models—side by side—and the benefits of a GLOBAL MODEL are clear.

MODEL	
NATIONAL MODEL	GLOBAL MODEL
<b>PROBLEM</b>	<b>SOLUTION</b>
Humanity is competing AGAINST ITSELF	Humanity works together in GLOBAL COOPERATION
<b>PSYCHOLOGY</b>	
<p><b>Self-interest, Competition</b></p> <p>Competition and self-interest lead to aggression, lies, deceit, corruption and countless other negative traits in many people.</p> <p>It brings out the worst in human behaviour:</p> <p><b>War, Conflict, Political aggression, Climate destruction, etc.</b></p>	<p><b>Shared Interest, Cooperation</b></p> <p>Cooperation and a focus on shared interest lead to wiser decisions, supportive attitudes, openness, honesty, etc.</p> <p>It will bring out the best in human behaviour:</p> <p><b>International peace, Teamwork, Climate cooperation, etc.</b></p>
<b>ECONOMICS / GDP</b>	
<p><b>National GDP</b></p> <ul style="list-style-type: none"> <li>In a globally competitive Economic System, each Nation State will focus on its own National GDP and inevitably seek to protect its economic interests. Economic self-interest can often lead to aggressive, selfish, and outright foolish political decisions being made regardless of the cost to peoples' lives or to the planet. Economic obsession can also result in political threats between nations, war, conflicts, nuclear threats, economic blackmail, corruption, spying, computer hacking, etc.</li> </ul>	<p><b>A GLOBAL MODEL eliminates National GDP.</b></p> <ul style="list-style-type: none"> <li>As a GLOBAL MODEL would be based on an ethically-focused 'Global Economic System', nations no longer need to be concerned about their GDP. A global economic approach will remove this financial pressure from individual nations, while also providing complete financial security to all nations.</li> </ul> <p>This approach will also result in wiser and more ethical decisions by Nation States.</p>
<b>COUNTLESS PROBLEMS</b>	<b>COUNTLESS BENEFITS</b>
<p><b>The problems repeat themselves and are never fixed.</b></p> <ul style="list-style-type: none"> <li>As humanity never addresses the root cause of its problems, the cycle of war, conflict, violence, economic corruption, poverty, homelessness...is never-ending. Charities have been struggling for decades to try and prevent this dysfunctional system from totally falling apart as it continues to destroy lives every day.</li> </ul> <p>The current system has countless problems because its very foundation creates a state of psychological and economic conflict within humanity.</p> <p><b>To fix the problems, we have to fix the system.</b></p>	<p><b>The problems will finally be fixed.</b></p> <ul style="list-style-type: none"> <li>Through a GLOBAL MODEL, support will be provided to directly address and <i>permanently</i> FIX the existing problems. And as intelligent directives are implemented globally, these will also eliminate other existing political, economic and social problems.</li> </ul> <p>Not only will a GLOBAL MODEL fix the world's major problems, but it also represents the moment in humanity's history when it makes a commitment to truly work together for the common good of all nations.</p> <p><b>This MODEL will bring out the very best in humanity.</b></p>





## International Peace

**“WHEN EVERYONE IS ON THE SAME SIDE...WHO IS THERE LEFT TO FIGHT?”**

In a GLOBAL MODEL, humanity is on the *same side*. Nations work together in global partnership, instead of individually competing against each other for their own nation’s interests.

Just as the nations in Europe achieved peace through the creation of the European Union (EU), humanity will achieve global peace through a GLOBAL MODEL.



## Exceptional Quality of Life

### SIGNIFICANT BENEFITS FOR BILLIONS

With humanity’s goals fully aligned, it will be able to achieve planetary-wide improvements for all nations, across all sectors of society.

As EVERY individual will benefit from the positive and globally supportive ideas that are implemented, individual quality of life will significantly improve.



## Supportive Global Relations

### BETTER RELATIONS BETWEEN ALL NATIONS

In a competitive world, relations between countries will always break down due to the aggression and self-interest related to a competitive political and economic system.

In a cooperative world, the exact opposite happens—relations significantly improve. By working together in global cooperation, humanity is adopting a supportive approach.



## Faster Scientific Solutions

### FASTER SOLUTIONS TO GLOBAL PROBLEMS

When nations work together towards their common good, they *fully coordinate and share* their scientific, technological, and medical knowledge.

A GLOBAL MODEL will result in faster medical cures and the rapid advancement and implementation of scientific solutions across all sectors.

For more information about the benefits of a GLOBAL MODEL, visit this website: [www.newglobalmodel.com](http://www.newglobalmodel.com)

# HISTORY TIMELINE

## A GLOBAL MODEL is the next natural step in humanity's social evolution.

**H**istorically, humanity has progressively adopted a new social Model to address population challenges and conflicts of interest over the centuries.

When Tribal groups faced population challenges or conflicts of interest (due to leadership, resources, food, and so on) within their Tribe or with another Tribe, a choice would often need to be made; Unite and work together, separate, or go to war.

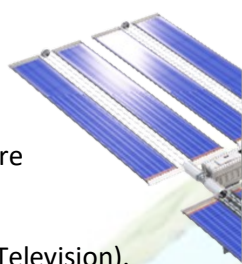
As the centuries passed and population numbers increased, Tribes eventually became Local Communities and Civilisations. Local Communities, Monarchies, and Dynasties evolved into the Nation States.

**The next step in this social evolution is for humanity to work together as a people — to transition from a NATIONAL to a GLOBAL Model.**

As with previous social transitions, this is a necessary and natural step. It allows humanity to adopt a more intelligent Model capable of addressing the problems within the existing model.

Humanity has a **GLOBAL** Communication Network (Telephone). It has a **GLOBAL** Broadcasting Network (Television). It has a **GLOBAL** Information Network (Internet). And many Corporations and Businesses have also adopted a **GLOBAL** market approach. However, unless nations transition to a GLOBAL MODEL, conflicted interests between them will continue to create endless problems.

**The time has now come for humanity to implement a new GLOBAL MODEL.**



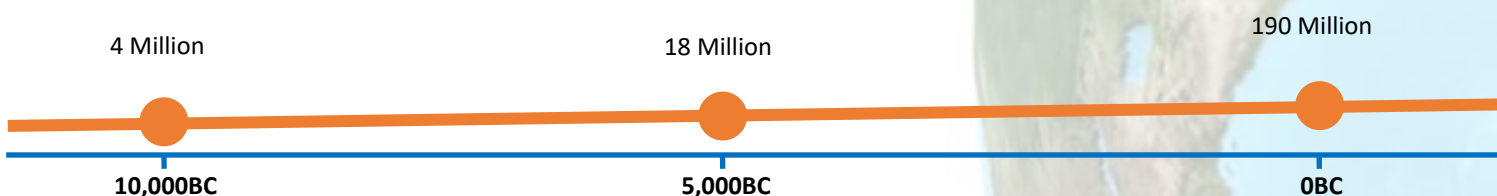
INDIVIDUAL → TRIBAL → LOCAL → NATIONAL → GLOBAL

INDIVIDUAL → TRIBAL → LOCAL → NATIONAL → GLOBAL

**INDIVIDUAL** leadership becomes necessary to address *conflicts of interest* within a Group or Clan.

**TRIBAL** leadership becomes necessary to address *conflicts of interest* between different Clans or Groups.

**LOCAL** Community/Monarchy/Dynasty leadership becomes necessary to address *conflicts of interest* between Tribes, Clans and Groups.



You are Here!



## GLOBAL

**GLOBAL** leadership becomes necessary to address *conflicts of interest* between Nations.

This transition requires an intelligent **GLOBAL MODEL**.

Population:

8 billion in 2022

6 billion in 2000

1 billion in 1810

210 Million

295 Million

460 Million

8bn

6bn

4bn

2bn

0

Population (billions)

## NATIONAL

**NATIONAL** leadership becomes necessary to address *conflicts of interest* between Local Communities, Monarchies, Dynasties...

500AD

1000AD

1500AD

2000AD



# QUESTIONS

---



When considering the implementation of a GLOBAL MODEL, it is understandable that there will be questions. This Q&A addresses some of those questions.

### What is a GLOBAL MODEL?

**In simple terms, a GLOBAL MODEL is based on nations collectively working together for their common good.**

In this model, the interests of nations are now globally aligned towards a set of shared goals and common values which benefit them all.

This new level of global cooperation will phenomenally improve relations between all nations. It will allow humanity to implement wise and sensible decisions that are no longer being obstructed by the political and/or economic interests of any individual nation, due to its conflicted interests with others.

### How will these global decisions be made?

**A professional International Humanitarian/Scientific Organisation (IHO) is required. Alternatively, an upgraded version of the United Nations could work.**

An independent *non-political* Organisation (a *pure* Humanitarian/Scientific Organisation) will implement and coordinate global decisions designed to benefit all nations equally—and protect life on the planet.

### Does this mean that individual nations will no longer be responsible for global decisions?

**YES. In a GLOBAL MODEL, nations agree to support the independent global directives made by the IHO, designed to benefit them all.**

Nations retain responsibility for all decisions that are made at a 'National' level—just as they do today. However, should a Nation implement a decision that conflicts with a global directive, the global directive would take precedence.

### How can nations and individuals work together when they often have different beliefs and goals?

**While each individual is unique, deep down, we share a common set of values - *'We want to live in a peaceful world where we can be happy, while also living a life of purpose that fulfils our potential.'***

It is our shared human values that provide the foundation for us to work together as a people—our shared humanity. While some people focus on our differences, it's what we have in common, that unites us.

**If we can set aside our differences to create a United Nations (UN), a European Union (EU), and an International Space Station (ISS), then we are capable of doing the same and creating a GLOBAL MODEL that supports and benefits all nations.**

### As a GLOBAL MODEL will end all war and conflicts between nations, what will happen to the Military & Arms industries? What will happen to the jobs?

**One of the fundamental benefits of a GLOBAL MODEL is that it's a supportive model—and therefore support can be provided wherever it is needed.**

A GLOBAL MODEL provides the opportunity to transform any potentially destructive and harmful Industry or Institution, into something more positive and beneficial to the world.

For example, the weapons manufacturing and fossil fuel industries. These can both be given the necessary financial support and transformed into more constructive and useful roles (like space exploration, robotics, clean energy technology, etc).

In a GLOBAL MODEL, no jobs need to be lost at all.

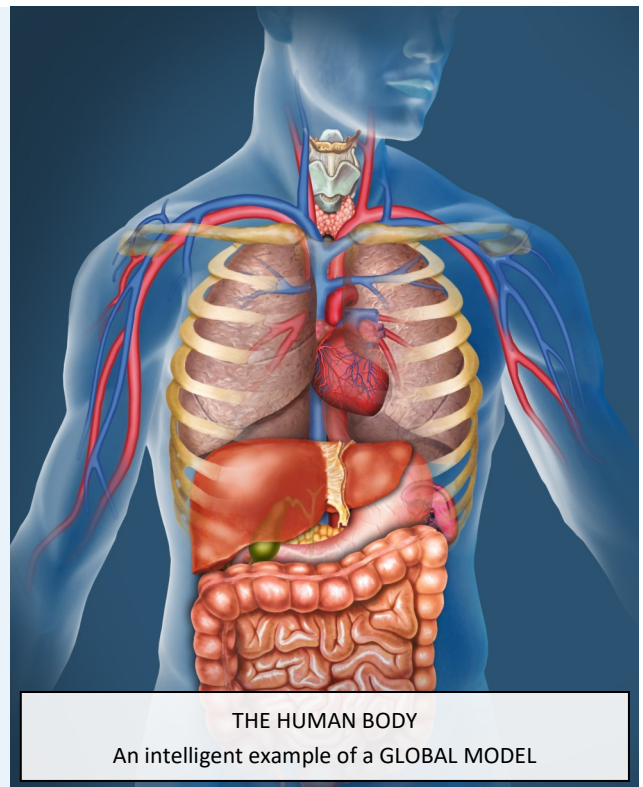
## Is there a reason why humanity needs to compete AGAINST ITSELF?

**Well...no, there isn't. Therefore, we are completely free to implement a GLOBAL MODEL that will fix the world's problems and benefit all nations—equally.**

When you observe human society, it's pretty obvious that something is fundamentally wrong with how it operates.

The human body (on the right) operates intelligently. All organs cooperate and work together for the collective well-being of the whole body. *As a result, the organs also benefit individually—and one could say, equally.*

Humanity however, does the exact opposite—it COMPETES AGAINST ITSELF. Predictably, this leads to a world of problems and inequalities. By implementing a GLOBAL MODEL, we can correct this fundamental mistake.



### Are there any real obstacles to implementing a GLOBAL MODEL?

**No. The only obstacle to implementing a GLOBAL MODEL is psychological - not practical.**

Most individuals have simply never considered the idea of a GLOBAL MODEL, let alone the phenomenal benefits that it offers.

Through international discussion and debate, as more people begin to appreciate the benefits of a GLOBAL MODEL, many will most likely start to ask, “Why didn't we implement a GLOBAL MODEL decades ago?”

### Does a GLOBAL MODEL require all nations to support it?

**While that is the ideal plan, a GLOBAL MODEL can start to take shape with the support of any number of nations—large or small.**

As larger nations already exert significant influence on the world stage due to their political, military and economic power, they strategically tend to resist any form of change due to their interest in maintaining the ‘status quo’.

And while smaller nations generally feel economically pressured to ‘fall into line’ behind the more powerful nations, it is the smaller nations that are most likely to initially support a GLOBAL MODEL.

**Historically speaking, as humanity has previously adopted new Models (Tribal...Local...National...) in response to population challenges and conflicts of interest, is the implementation of a GLOBAL MODEL therefore inevitable?**

**YES. Here are a few reasons to explain why.**

**1. In one scenario, humanity makes the simple choice to implement a GLOBAL MODEL because it becomes AWARE that it will address and fix its problems.**

Every day, news bulletins inform us that our world is broken; that there are major problems across all sectors of society: political, economic, environmental, health, food production, and so forth. We are told that we need a REAL SOLUTION to these problems.

A GLOBAL MODEL is a REAL SOLUTION! It is sensible. It is psychologically sound. And it will significantly benefit ALL NATIONS. As society realises this, humanity chooses to implement a GLOBAL MODEL.

**2. In the worst-case scenario, humanity does it the hard way. It continues to ignore its *conflicted system* until one of the many global stress factors (political, nuclear, economic, environmental, social, health,...) reaches an inevitable breaking/tipping point...and the destructive fallout impacts many nations.**

In this case, humanity is left with no choice. It is forced to adopt a GLOBAL MODEL to address the devastation.

# GLOBAL MODEL



To implement a GLOBAL MODEL, we all have a role to play: Individuals, Activists, Writers, Celebrities, Humanitarian Leaders, Scientists and Political Representatives. We need to encourage international discussion and debate about the benefits of a GLOBAL MODEL.

### Activists / Celebrities / Social Influencers

**WHAT IF YOU COULD FIX ALL OF THE PROBLEMS BY JUST FOCUSING ON ONE PROBLEM?**

Instead of endlessly protesting to governments and challenging corporations to do what is right (and not just what is profitable), have you ever considered joining forces to send out a single message which would fix all of the problems?

“Let’s adopt a GLOBAL MODEL and work together as a people for the common good of all nations”. Or the short version: “Let’s GO GLOBAL”.

***A single, clear and synchronised message is far more powerful than a multitude of different humanitarian messages, which tend to overwhelm people.***

### Political Representatives

**HOW MANY TIMES HAS GLOBAL COOPERATION BETWEEN NATIONS FAILED BECAUSE OF NATIONAL SELF-INTEREST?**

Whether it’s a G7, G20, UN Environment COP, or some other global political meeting, one of the constant stumbling blocks is the political and/or economic *conflicts of interest* between nations. With each Nation focused on its own interests, global consensus and true cooperation is incredibly rare!

A GLOBAL MODEL will unite humanity and end the conflicts of interest between nations. It will allow all nations to benefit equally in this global partnership.

**What can you do to help make this happen?**

### Writers / Journalists / Academics

**PEOPLE WILL SUPPORT A GLOBAL MODEL IF WE DISCUSS, WRITE & SHARE OUR THOUGHTS ABOUT WHY A GLOBAL MODEL IS NECESSARY.**

To help individuals appreciate the phenomenal benefits of a GLOBAL MODEL, they first need to understand what it is, and why the world needs it.

We need to write articles, hold discussions and debates, and help people to appreciate that there is a *simple and sensible solution* to the world’s problems.

**While most individuals have never contemplated what a GLOBAL MODEL is, when they learn about its benefits, they are usually very enthusiastic and excited by the possibilities it offers.**

### Humanitarian Leaders / Scientists

**WHEN A GLOBAL MODEL WILL FIX EVERY MAJOR HUMANITARIAN PROBLEM IN THE WORLD TODAY, DOESN’T IT MAKE SENSE TO SUPPORT IT?**

The *humanitarian community* represents the *heart of humanity*. It is desperately trying to prevent a broken system from totally falling apart. However, in a conflicted world, this battle can never be won.

The *scientific community* represents the *rational intelligence* of humanity. It already has the answers and the technology to solve the world’s problems.

Instead of constantly fighting a corrupt and broken system that is reluctant to change, **why not consider working together and trying a ‘global’ approach?**

## Psychologically speaking, what is the greatest challenge to implementing a GLOBAL MODEL?

**It's a combination of awareness  
and individual attitude.**

OVERSIGHT PANEL  
GLOBAL UPDATE

IHO  
INTERNATIONAL  
HUMANITARIAN ORGANISATION  
THE UNITED NATIONS OF THE PEOPLE



In general, most individuals have never profoundly considered the destructive implications of a world that is in constant psychological conflict with itself—across all sectors of society—from nations that politically and economically compete against each other; to political parties, businesses, and even individuals who compete against each other for job roles. *The full impact of conflicted interests within society is rarely appreciated.*

For this reason, most people also never consider the benefits of what the world would be like if we implemented a GLOBAL MODEL and worked together for the common good of all nations. A GLOBAL MODEL would remove the existing conflicts of interest within society and focus our global psychology on our shared interests.

It will also phenomenally benefit ALL nations and every species on the planet. When you truly understand the benefits of a GLOBAL MODEL, deciding to support its implementation is just simple common sense.

Unfortunately, as the global political landscape has become scarred by generations of competitive aggression, fear, and paranoia, such common sense is often lacking. Instead of promoting peace and unity, some political parties and politicians promote fear, hatred, and 'Us-vs-Them' dialogue. They create conflict within society by inflicting their ignorance on others. *Their backward tribal thinking keeps humanity stuck in a state of division.*

**For humanity to truly move forward as a people, it needs to do the opposite—globally unite and work together.**

### How long will it take to implement a GLOBAL MODEL?

**THIS DEPENDS ON A NUMBER OF FACTORS.**

There are some significant problems in the political world. These include psychological issues, corruption, and 'hijacked governments' - to name just a few. There are also countless conflicts of interest between Nation States, Political Parties, and Individuals within politics. While these problems are undeniable, there are exceptions.

Some Nations, Political Representatives, and Humanitarian Leaders have progressive, forward-thinking mindsets. Therefore, they are in a position to make a truly significant and historic contribution to a GLOBAL MODEL.

Due to their job role, celebrity, or social status within society, some individuals can influence change more rapidly than others. *When an individual of significant influence (Political Representative, Humanitarian Leader, Celebrity, Social Media icon, Philanthropist...) appreciates the benefits of a GLOBAL MODEL—and then shares this knowledge with the world's global media—the transition to a GLOBAL MODEL can happen very quickly!*

#### **Awareness**

The key is awareness. Once individuals become aware that a GLOBAL MODEL offers a psychologically sound and practical solution to the world's problems and also provides significant benefits to all nations and people—equally, it will become inevitable.

**Due to its phenomenal benefits, implementing a GLOBAL MODEL is the wisest decision humanity can make.**



# WHAT IS THE RIGHT THING TO DO?



As a PEOPLE—when faced with a series of escalating GLOBAL CRISES (political, economic, climate, global species extinction...), we need to ask ourselves an important question - ‘What is the right thing to do?’

## MAKING THE RIGHT DECISION

**When humanity is faced with a series of global crises, there is only ONE intelligent course of action—As a people, you need to globally work together to fix those problems.**

However, this becomes impossible when each nation is both psychologically and strategically focused on protecting its own political, military and economic interests. *Unless you address this problem first, you cannot truly fix anything. The problems will simply continue...endlessly!*

This is why a GLOBAL MODEL is necessary. It will align the interests of all nations to the same set of shared values and goals which benefit them all—equally. It removes the *conflicts of interest* between them.

Einstein was right when he stated that ‘we need to engage a *higher level* of thinking than the thinking which led to the problems in the first place’ (paraphrased). It’s time for humanity to truly work together as a people.

## HIGH-LEVEL THINKING

Support the implementation of a **GLOBAL MODEL** so that we can truly work together as a people to fix the world’s problems.

[www.newglobalmodel.com](http://www.newglobalmodel.com)

OVERSIGHT PANEL  
GLOBAL UPDATE

IHO  
INTERNATIONAL  
HUMANITARIAN ORGANISATION  
THE UNITED NATIONS OF THE PEOPLE



OR

## LOW-LEVEL THINKING

Humanity keeps **COMPETING AGAINST ITSELF**. Some keep ‘fighting the system’ as they try to fix the endless *symptomatic* problems. While others simply watch the problems appear in their daily lives and the News Media—EVERY DAY.



# ABOUT THE AUTHOR

---



GRANT DIVE

**D**ue to the often cynical and paranoid nature of global politics, I felt it would be sensible to include a few details about who authored this document. This is simply to avoid any individual making false assumptions about political affiliations, hidden objectives, or some other personal motive.

In terms of my background, I grew up in New Zealand and currently live in the UK. I have a full-time job and typical day-to-day responsibilities. As an individual, I have no political affiliations.

The views and recommendations outlined in this document are insights gained from more than 35 years of psychological observations and analysis of the human race, as well as its politics and global problems.

The reason for writing this report was to share the importance of this knowledge with others so that the benefits of a GLOBAL MODEL can be understood and appreciated by all. As would be true of most people, I simply want to see humanity fix its problems—instead of repeating the same mistakes, over and over again.

**Ask yourself: How can nations ever achieve true international peace or fully resolve the world's global problems, when *conflicts of interest between them*, continue to create new problems every day?**

**The recommended solution—implementing a GLOBAL MODEL—is therefore *essential* in order to fix the fundamental problem within society; that HUMANITY COMPETES AGAINST ITSELF.**

If you have carefully and objectively reviewed this document, then the solution of implementing a GLOBAL MODEL should make rational and intelligent sense. As a GLOBAL MODEL psychologically aligns the interests of all nations to the same set of shared goals, it allows nations to truly work together in global cooperation for their common good.

In that sense, the *League of Nations* was flawed in its design, as is the current *United Nations*. A non-political GLOBAL MODEL which benefits all Nations—equally, will correct the design mistakes of the past.

In summary, a GLOBAL MODEL is the wisest solution to fixing humanity's problems and the most psychologically sound approach to true global cooperation between nations.

**Who will be the first leader to support a GLOBAL MODEL and write their name into history?**

Someone will inevitably rise to this challenge and declare to the world's media:

*"As a people, we need a new GLOBAL MODEL. A GLOBAL MODEL will allow us to work together for the common good of all nations—so that as one people, we can fix the world's problems and achieve true international peace."*

On that day, a new era will begin.

A handwritten signature in black ink that reads "Grant Dive". The signature is written in a cursive style and is underlined with a single horizontal stroke.



SIMPLY STATED

THE WISEST SOLUTION TO THE WORLD'S PROBLEMS  
IS A **GLOBAL MODEL**.

A **GLOBAL MODEL** psychologically and practically aligns the interests of all nations to the same set of shared values and goals, thereby allowing humanity to truly work together as a people so that we can genuinely fix the world's problems and protect life on the planet for future generations.

WILL YOU SUPPORT IT?

For more information:

[www.newglobalmodel.com](http://www.newglobalmodel.com)